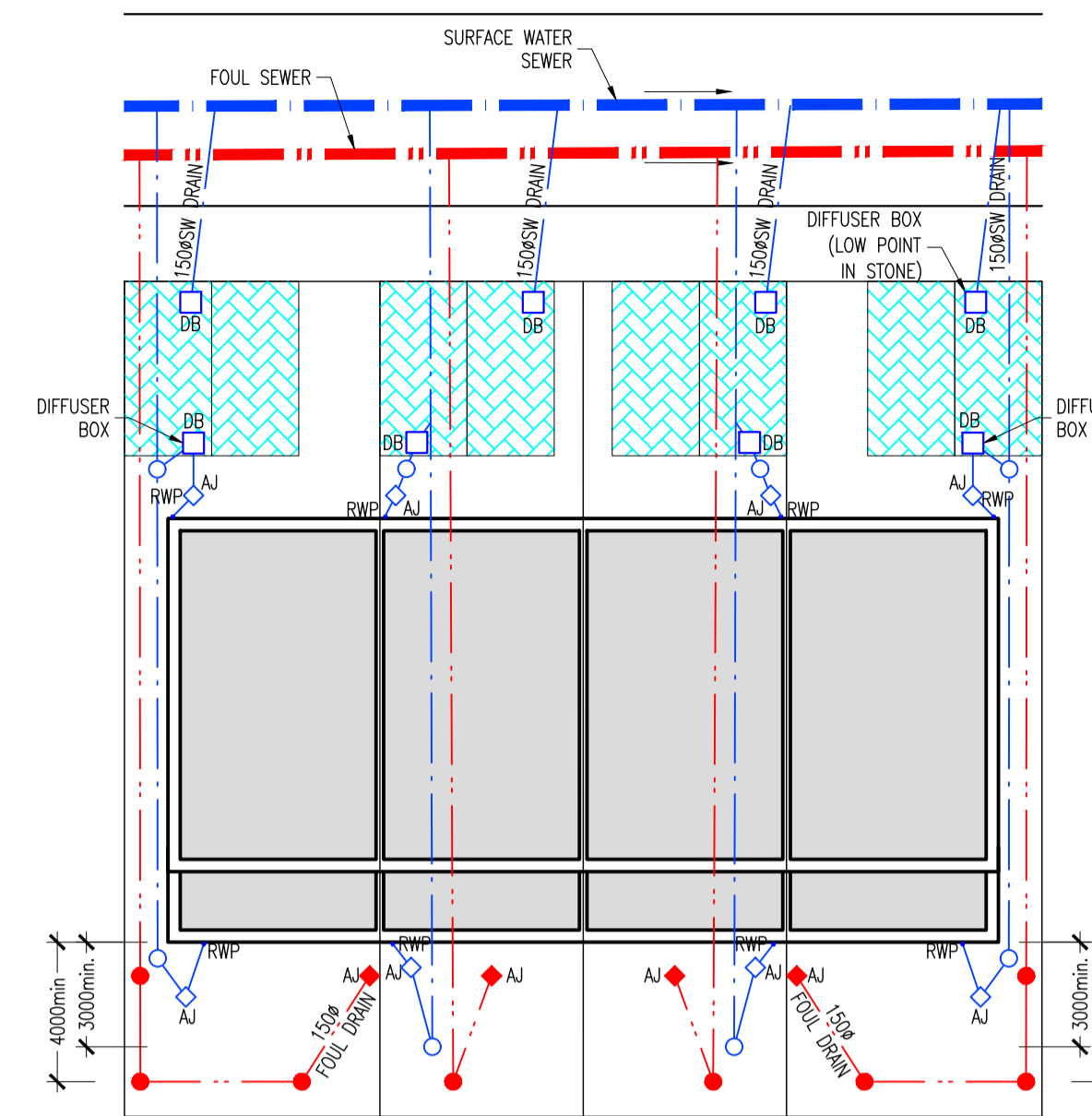
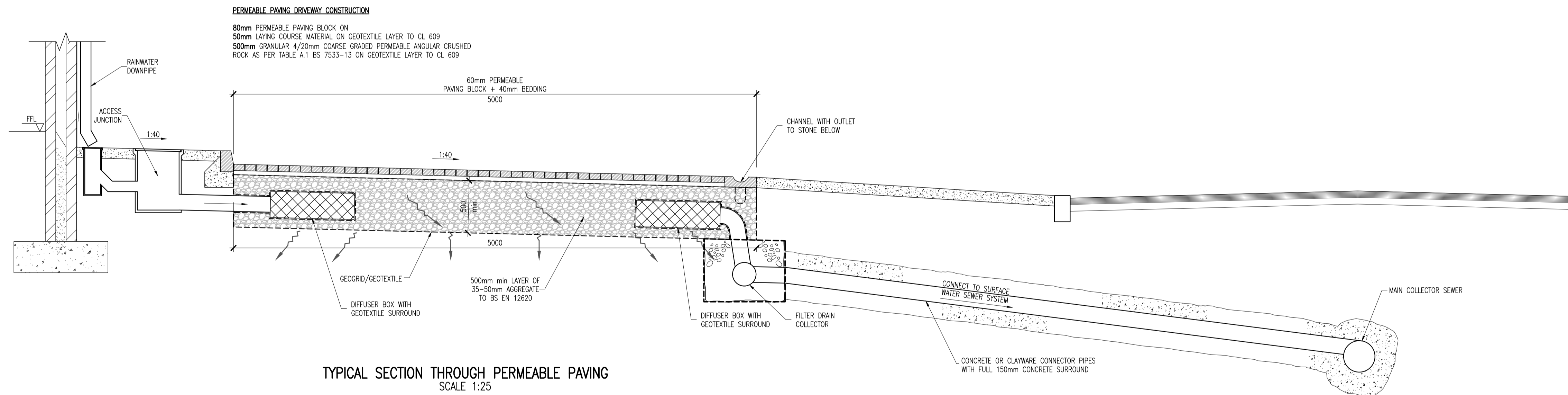


TYPICAL HOUSE DRAINAGE LAYOUT(SEMI DETACHED)  
SCALE 1:200

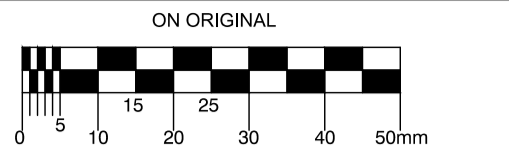


TYPICAL HOUSE DRAINAGE LAYOUT(TERRACED)  
SCALE 1:200



TYPICAL SECTION THROUGH PERMEABLE PAVING  
SCALE 1:25

© COPYRIGHT OF THIS DRAWING IS RESERVED BY DBFL CONSULTING ENGINEERS. NO PART SHALL BE REPRODUCED OR TRANSMITTED WITHOUT THEIR WRITTEN PERMISSION.



- NOTES:
1. ALL SEWERS SHALL BE PRESSURE TESTED PRIOR TO BACKFILLING
  2. TYPE 1 GRANULAR MATERIAL : BROKEN STONE OR GRAVEL TO PASS 10mm SIEVE AND BE RETAINED ON 5mm SIEVE.
  3. TYPE 2 GRANULAR MATERIAL : BROKEN STONE OR GRAVEL TO PASS 10mm - 25mm SIEVE, ACCORDING TO PIPE SIZE, (SEE TABLE) AND BE RETAINED ON 5mm SIEVE.
  4. TYPE 3 SELECTED FILL : UNIFORM READILY COMPACTED MATERIAL FREE FROM TREE ROOTS, VEGETABLE MATTER, BUILDING DEBRIS, AND FROZEN SOIL AND EXCLUDING CLAY LUMPS RETAINED ON A 75mm SIEVE AND STONES RETAINED ON A 37.5mm SIEVE.
  5. RIGID PIPES SHALL MEAN CAST OR SPUN IRON, CONCRETE OR CLAY.
  6. CONCRETE SURROUND REQUIRED TO ALL MANHOLE RINGS FROM 3.0m BELOW FINISHED GROUND LEVEL.
  7. ALL LADDERS, RUNGS, SAFETY CHAINS etc SHALL BE HOT DIPPED GALVANISED TO BS 729 OR EQUIVALENT

A	09-10-19	PLANNING SHD STAGE 3	DJG	DCS
REV.	DATE	DESCRIPTION	BY	CHKD.
<b>PLANNING SHD STAGE 3</b>				
DESIGNED	DMW	PREPARED	DJG	
DATE	DEC 2018	CHECKED	DJR	

**DBFL** Dublin Office: Ormond House, Upper Ormond Quay, Dublin 7, Ireland. PHONE +353 1 400 4000 FAX +353 1 400 4050

Waterford Office: Unit 2, The Chandlery, 1-2 O'Connell Street, Waterford, Ireland. PHONE +353 51 308 500 FAX +353 51 844 813

DBFL Consulting Engineers email: info@dbfl.ie site: www.dbfl.ie

PROJECT  
**STRATEGIC HOUSING DEVELOPMENT AT COLPE WEST, DROGHEDA, CO. MEATH**

DRG. TITLE  
**TYPICAL HOUSE DRAINAGE DETAILS**

CLIENT  
**SHANNON HOMES DROGHEDA LTD.**

SCALE	AS SHOWN @A1	FILE REF.	170092-3067
DRG. NO.	170092-3067		A